

The logo for HERhealthEQ features a stylized cross icon on the left, composed of four colored squares: orange, teal, light blue, and yellow. To the right of the icon, the text "HERhealthEQ" is displayed in a bold, sans-serif font. "HER" is in dark blue, "health" is in black, and "EQ" is in a bright cyan color.

HERhealthEQ

Equipment for Equity

2020 ANNUAL REPORT



INTRODUCTION

Dear Friends,

2020 was a year most of us want to forget... We agree. The year started off with promises of greatness as we held an incredible fundraising event with many of you in NYC. Little did we know lock-down would be announced 2 weeks afterwards. As an organization we spent the year solidifying the importance of what HERhealthEQ focuses on, non-communicable diseases affecting women in developing countries. That focus is even stronger now in the wake of the pandemic, as NCD's are a contributing factor for hospitalization and death due to COVID-19. It also solidified that we all need to help each other and ensure that the healthcare community around the world has the equipment and tools to solve these health conditions.

While many of our programs around the world were put on pause to focus on the pandemic, we expect that they will start-up again soon and grow with greater importance. Screening, detection, and early treatment are the way forward for women to maintain and/or regain their health. These women are our path for economic and a health future, and we must ensure they have their health.

In 2021 we have significant plans to expand to new markets, including the US, India, and further into Latin America and Africa. Thank you for your continued support of HERhealthEQ and we know that HERhealthEQ will continue to be a leader in ensuring health equity for women is a reality throughout the world.

With sincere thanks and excitement,
Marissa K. Fayer





VISION

A world where healthcare is accessible to all women.



MISSION

To improve women's health in developing countries by providing access to medical device equipment, creating an equitable standard of care.



VALUES

- Sustainability
- Health Equity
- Impact-Driven
- Community Commitment

IMPACT

2,565

Women directly screened or treated in 2020



19,375

Women directly screened or treated since our founding



2020 NOTEWORTHY MOMENTS

2020 was a year of discovery, development, pivoting and planning. As the world adjusted to the reality of a global pandemic, HERhealthEQ remained nimble and forward-thinking - accomplishing short-term goals while planning ahead for greater impact in 2021 and beyond.

REBRANDING AND REAFFIRMING OUR MISSION

HERhealthEQ rebranded for a fresh, updated look while remaining true to our mission and our core belief that all women deserve equitable access to medical device equipment.



DEVELOPING OUR TEAM

Marissa Fayer, CEO, was accepted into the Fulcrum Venture Accelerator, Miller Center Social Enterprise Program, and the Mentor Capital Network fall cohort. These are major accomplishments that will increase our organizational expertise.

PLANNING FOR THE FUTURE

While our current work continued to reach thousands of women in Costa Rica, Tanzania, Jamaica, and Vietnam, HERhealthEQ focused on our plans for the future. Throughout 2020, HERhealthEQ devoted time to explore ways to increase our future impact. As part of this, we are developing a new business model that will allow us to create long-term and self-sustaining projects to impact even more women and their communities.

LOOKING AHEAD

INDIA

In 2020, HERhealthEQ solidified partnership plans with Wayu Health, Jhpiego International, and Niramai to provide mobile handheld screening technology to detect breast cancer in Indian women living in three tier-two cities in India. These 30 mobile screening units will increase early detection, decrease the breast cancer mortality rate, and are projected to screen over 100,000 women in just two years.

MEXICO

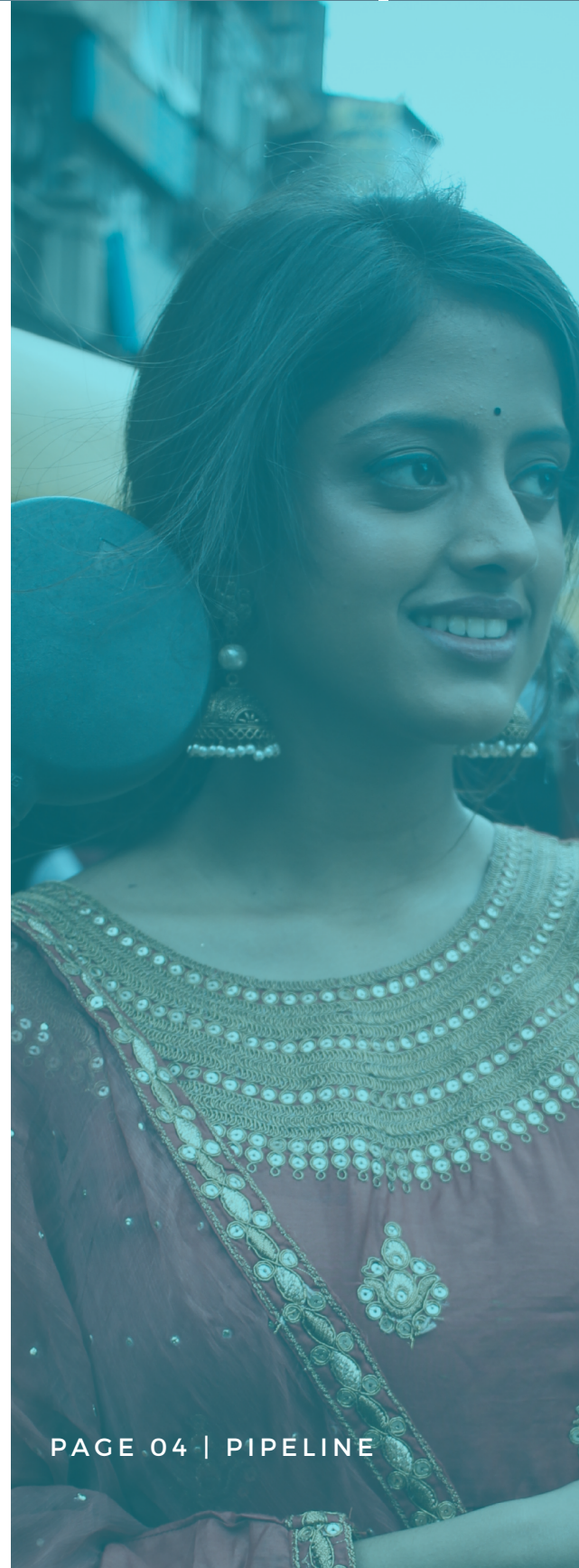
In partnership with Cluster Médico Jalisco and the Jalisco Government, a program has been created to fight the root cause of millions of preventable deaths. Mobile health caravans equipped with state of the art digital health technologies plan to travel through Mexico and accelerate health promotion, detection, monitoring, and prevention.

BURKINA FASO

In partnership with Jhpiego International, MedGyn and the Kimi Foundation, HERhealthEQ successfully delivered a Video Colposcope to Ouagadougou, Burkina Faso. This also included a two-year service contract for the receiving destination and will provide cervical cancer detection and treatment services.

USA

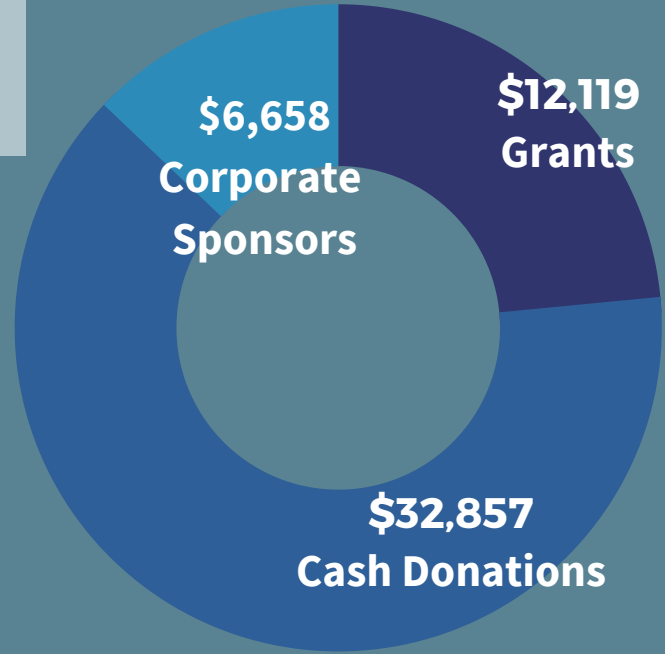
In an effort to support a domestic response to the health crisis of 2020, HERhealthEQ will partner with Plan A Health and Lutech to deliver a fetal monitor to rural Mississippi. This is critical in ensuring the health of both mother and child in need of quality medical access, especially during a time of health uncertainty.



FINANCIALS

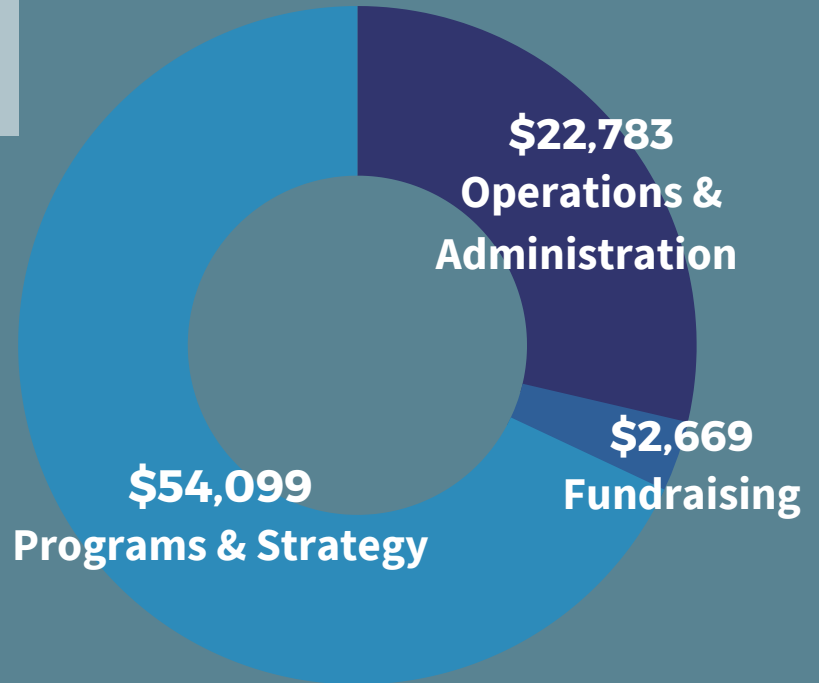
REVENUE

\$51,634



EXPENSES

\$79,581



TEAM

HERhealthEQ is comprised of a hardworking ground team, a dedicated Board of Directors and a Board of Advisors.

GROUND TEAM

Marissa K. Fayer *Founder and CEO*

Michelle Skaer-Therrien *Executive Director*

Afsana Hye *Grants/Program Manager*

Briona Collins *Grants Intern*

Alessandra Marra *Grants Intern*

Ariana Reginato *Content Developer and General Coordinator*

Mercedes Villalba *Accountant*

Laura Hornby *Social Media Intern*

Danielle Bennett *Social Media Intern*

BOARD OF DIRECTORS

Helene Clayton-Jeter

Susannah Coltman *Treasurer*

Glenn Davis *Chairperson*

Marissa K. Fayer

Gary Giampetruzzi

Andrew Joseph *Secretary*

Samira Salman

Tatiana J. Whytelord *Vice Chairperson*

BOARD OF ADVISORS

Caitlin Canderan

Russell Fayer

Elisa Frenz

Emma Goldstein

Susanna Goldenstein

Andy Levy

Sheila Patel

Christine Santagate

Marie-Blanche Tchetgen

PARTNERS

Esaote
Lutech
MedGyn
Wisap
Boston Scientific

Henry Schein
CureCervicalCancer
Fundacion Anna Ross
Jhpiego International
SkyConnect, Inc.
Fondation Kimi

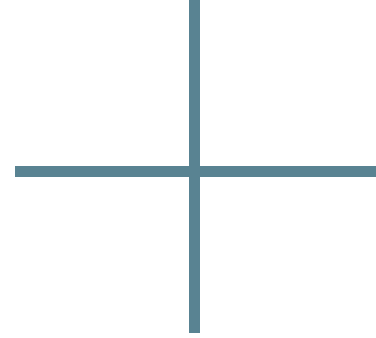
Evoke Neurosciences
Volta Capital
GlobalGiving
Pledgeling
BioSector2 PR Firm
Paul Hastings LLP

DONORS

A-Connect
Rachita Agarwal
Michael Angarsky
Anonymous
Joel Antipuesto
Jessica Benson
Sonja Brock
Sapna Bohra
Barry Brooks
Jordan Burke
Justin Burry
Susannah Coltman
Cecilia Costa
Glenn Davis
Adrian Dewez
Max Dewez
aha Fayek
Marissa Fayer

Russell Fayer
Christopher Gagne
Gary Giampetruzzi
Susanna Goldstein
Emma Goldstein
Steve Golembiewski
Alison Hager
Dan Healey
Margaret Hirce
Syed Ibrahim
Ivy Insights
Kuldeep Jiwani
Andrew Joseph
Michala Kazda
Randi Klee
Ashwini Krishnamurthy
Monica Kumar
Doug Lankler
Pauline Lavaud

Anh-Dai Lu
Alexander Lucey
Kirsten Lyerly
Vicki Lyons
Linda Malek
Rohit Murti
Lucy Muzzy
Marina Pearlman
Jin Philips
Nikki Roda
Samira Salman
Christine Santagate
Mani Sayavong
KellySchulz
Rachel Schwartzberg
Adrian Tay
Mara V,
Tatiana J. Whytelord
Eden Wooster



AFTERWORD

Reflecting upon the last 12 months, the term resilience comes to mind; as we have all been affected by the global pandemic in many ways. Despite the hurdles placed in front of us, HERHealthEQ has continued to drive a positive impact to the lives of 2,565 women and this mission will continue in 2021, bringing change to just under 20,000 women since we first started.

Of course, we couldn't achieve this without the support of our partners, individual donors and truly outstanding leadership. Thank you for all of your support and your passion for health equity for women.

Glenn Davis
Chairperson of the Board



JOIN US!

    @herhealtheq
www.herhealtheq.org

HERhealthEQ believes that investment in women's health – particularly diagnosing and treating NCDs – is critical to reducing female mortality in developing regions. [Join us today by making a donation](#) to HERhealthEQ and help us continue making health equity a reality for all women.

HERhealthEQ is a registered 501c3 nonprofit organization, EIN 81-3013423. All donations made to HERhealthEQ are fully tax-deductible in accordance with United States Federal Law.

